

# Kick off seminar for new PhD candidates

Lise Øvreås

Vice Dean, Faculty of Mathematics and Natural Science



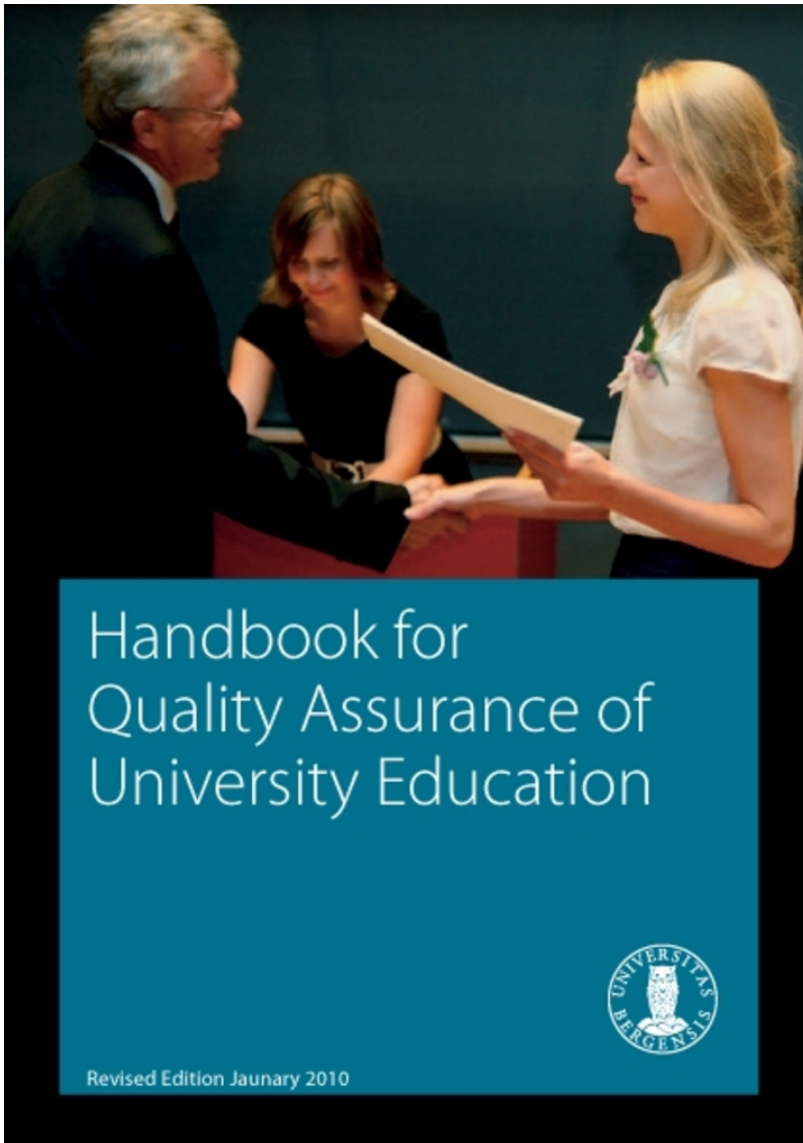
UNIVERSITETET I BERGEN

# Kick off seminar for new PhD candidates



- General information about UoB
- Information about the Faculty of **Mathematic and Natural Science**
- Research education at UoB
- Rules and directions (PhD agreement, PhD rules, HMS directions etc.) D'Arcy/Frigaard
- Practical information and PhD follow-up Hong Tran
- What happen if you need a break or abort

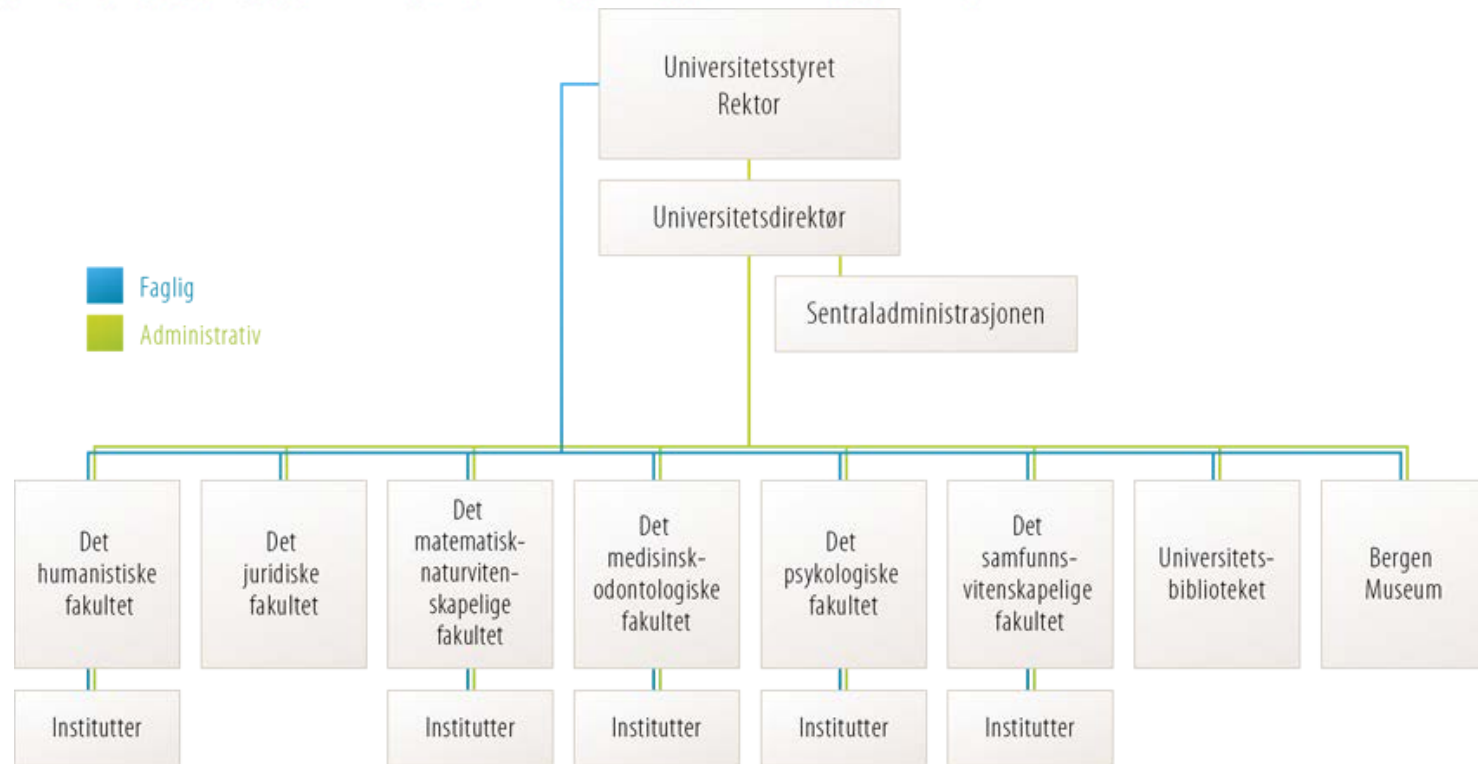
# General information about UoB



*"The basis for quality in education at UoB is that education is based on research - that is, both teachers and supervisors are themselves active researchers"*

*"High quality in education is dependent upon a learning environment that stresses updated knowledge in all disciplines and the will to quality in teaching"*

# University of Bergen



*The University of Bergen emphasizes academic quality in all fields within doctoral education. Our objective is to ensure that our PhD candidates are at the forefront of their fields and that they contribute both to the development of new knowledge and to the challenging of old. We expect our PhD candidates to think critically and to be part of the overall effort to ensure a functioning democracy and constructive public debate. The prerequisite for such efforts is research that is firmly grounded in the highest standards of academic integrity.*

*Berit Rokne, Deputy Rector*

# Doctoral education at UiB



One set of PhD-regulations for the PhD-degree from UiB.

The faculties is responsible for the admission and doctoral defence.

Faculties may have special adaptations to the institutional rules.

All questions regarding doctoral education will be treated by a faculty research committee or a PhD committee.

The faculties coordinate most research courses offered in the doctoral training, and manage the yearly monitoring of the PhD-candidate study progress and the reporting system.

The PhD-candidates must report annually their progress of their PhD-study (progress in thesis writing and training component).

The faculty offers doctoral education within the disciplines:



## Faculty of Mathematic and Natural Sciences



Biology

Geology

Physics  
& Technology

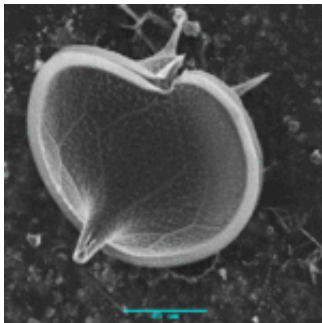
Mathematics

Molecular  
Biology

Geophysics

Chemistry

Informatics



+ partner institutions

## Faculty of Mathematic and Natural Sciences



\* 82 PhD candidates defended their thesis, 12 PhD candidates will finish in December 2011.

\* 452 active PhD candidates

\* 118 employed through the annual budget

\* 182 through The Research Council of Norway (NFR prosjekter)

\* 152 through other external finances (EU, NORAD, KVOTE etc.)

\* Average time for PhD work 3.7 yr.



# Quality doctoral education



The faculty offers high quality doctoral education in a range of disciplines.

Most departments are organised in research groups

→ As a PhD candidate, you will meet good research environments where you will take your position as a member of a research group with one or more academic advisors.

→ Supervision committees

The faculty hosts excellent research environments in a broad variety of subject areas and there is ample opportunity for inter- and multidisciplinary.

We also have good contact with external partner institutions (UNI, MRI, Statoil)





# Faculty of Mathematics and Natural Sciences

Norsk :: A A A

- Education
- Research
- Resources
- About the Faculty
- Contact us

Home → Faculty of Mathematics and Natural Sciences → Research → Doctoral education at the Faculty of Mathematics and Natural Sciences

## Doctoral education at the Faculty of Mathematics and Natural Sciences

The Faculty of Mathematics and Natural Sciences offers doctoral education within the following disciplines: biology, chemistry, earth science, physics and technology, informatics, mathematics, molecular biology and geophysics. We also offer doctoral training in collaboration with several partner institutions.

### This page is under construction.

For more information about the doctoral education at the University of Bergen, please go to [ph.d. at UiB](#)

[Admission to Doctoral Education at the Faculty of Mathematics and Natural Sciences](#)

[Research Schools at the Faculty of Mathematics and Natural Sciences](#)

[Research courses](#)

### The ph.d. committee

Each department is represented in the faculty ph.d. committee, and the committee is lead by the pro-dean (Dean of reserach). In addition there is one student representative and one ph.d representative.



### Regulations and application - ph.d

On this page you will find relevant documents for your PhD studies. This page is currently under construction.

### Research abroad

On this page you can find information about funding for doctoral training activities, scholarships and other internationalization activities of the doctoral training at the faculty.

### Regulations - dr. philos.

# Forskerutdanningsutvalget (FU)

## Research Education Board



Each department has a Research Education Board (ph.d committee).

### The faculty's Research Education Board:

- \* lead by the Vice Dean (Dean of Research),
- \* each department is represented in the board
- \* one student representative
- \* one ph.d representative.
- \* study section leader at the faculty is the secretary

### Examples on activities are:

- \* admission to the ph.d education
- \* approval of the education plan
- \* comments to inquiries (hearings)
- \* changes in the requirements
- \* Quality assignments

Meetings are held every 2 months (synchronized with the Faculty board meetings)

# Research Schools at the Faculty



Some departments have established local Research schools, or Research schools in collaboration with other institutions.

35% of our candidates are affiliated to a research school

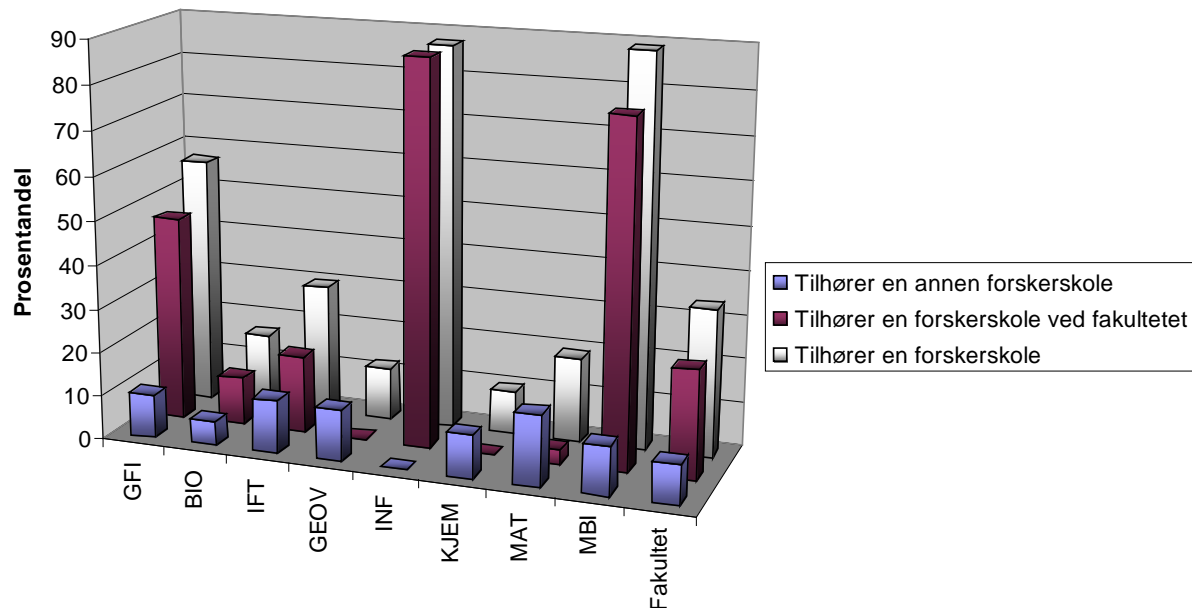
- Molecular and Computational Biology Research School
- The International Research Training Group (IRTG) "Development and Application of Intelligent Detectors"
- Norwegian School in Climate Dynamics
- Nordic Marine Academy
- Research School in Informatic and Communication technology
- Research School in Reservoir technology

# Research Schools at the Faculty



- \* Some departments have established local Research schools, or Research schools in collaboration with other institutions.
- \* 35% of our candidates are affiliated to a research school

- *The International Research Training Group (IRTG)*
- *Development and Application of Intelligent Detectors*
- *The Molecular and Computational Biology Research School (MCB), Bergen*
- *Nordic Marine Academy*
- *Forskerskole i informasjons- og kommunikasjonsteknologi (IKT)*
- *Nasjonal Forskerskole i målevitenskap*
- *Forskerskole i reservoar teknologi*



# Funding for doctoral training activities



During the doctoral study one can be granted up to kr 15 000,- for travel

Nobody can be granted more than one application per round.

The Faculty does not cover expenses for registration fee at conferences or to field work.

**Note:** The departments may have different ways of funding research education activities for the **ph.d. candidates**.

Contact your department for more information.

# What is needed to get the candidate through



- Responsibility at the faculty /department level
- Responsibility for the supervisor/supervision committee
- Students own responsibility



# Responsibility at the faculty /department level



The faculty wants to recruit motivated and high quality students, at all level and all directions at our faculty

AND we want to make sure that all/most candidates gets their degree

Physical and non physical support for education activities

- services provided by the University library
- Division of Academic Affairs
- Department of Estate and Facilities Management
- IT department
  
- These services are subjected to quality assurance system for which each individual department is responsible



- Average time for PhD work is 3.7 yrs
- How can we oversee that this time gets shortened?
- What mechanisms could be used to strengthen the research education at the faculty?
- Mid-time reporting/evaluation introduced in 2011



# Department responsibility



- \* To have a good supervisors
- \* Course in "Science supervision" for all new supervisors
- \* Good course portefolio
- \* Research schools
- \* Annual ph.d seminars



# Students responsibility



Be active and interact with the research groups

Take initiative for international research stay

I ALWAYS HAVE TO POSTPONE  
WHAT I *WANT* TO DO FOR  
WHAT I *HAVE* TO DO!



Good luck with the process!